
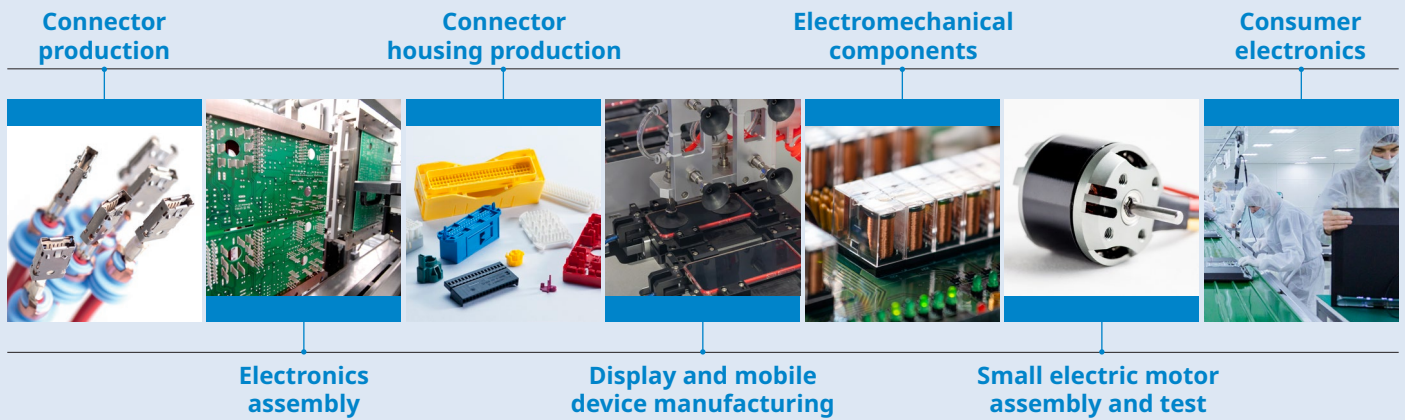

ELECTRICAL AND ELECTRONICS

From development to manufacturing –
your partner for reliable measurements



Measure once, measure right:
Trust in over 60 years of test and measurement expertise.
Take advantage of sensor solutions for force, torque,
pressure, and acceleration that are backed by intuitive
data acquisition and powerful analysis software.

TYPICAL APPLICATIONS FOR SOLUTIONS FROM KISTLER



Environmental testing



- Shock and vibration testing for electro-mechanical components, connectors and electronics
- Drop testing for consumer electronics
- Force measurement for connector qualification
- Haptic testing for HMI's and consumer electronics
- Testing of mechanical switching behavior for electromechanical components
- Torque measurement

Production, assembly and end-of-line testing

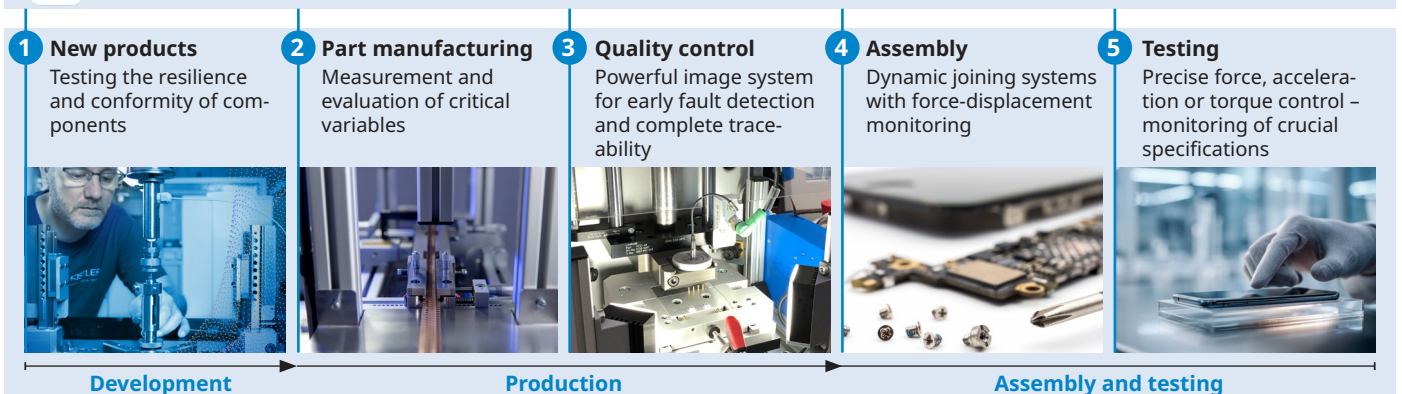


- Stamping tool protection and control
- Automated visual inspection of machined or stamped parts for connectors, terminals or other electromechanical components
- Injection molding monitoring and control for connector parts and consumer electronics
- Assembly monitoring and control for electromechanical parts, connectors, industry electronics
- Haptic testing in-and end-off-line of keyboard components
- Switching behavior of relays, contactors or circuit breakers
- Press-in monitoring for press-fit power moduls or single components insertion on industry electronic boards
- Crimping, stamping and press-in monitoring
- Torque testing in-line or end-off-line for compact electric motors
- Etc.

Customer value stream



jBEAM: Software solution for data analysis, processing, and storage



FROM DEVELOPMENT TO TESTING – A SEAMLESS APPROACH

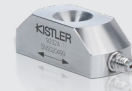
Development of electronic components



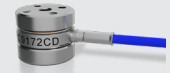
High sensitive piezoelectric force sensors



9217A



9232A



9172CD

Single axis and triaxial accelerometers, vibration testing



8011A



8715A



8766A

Dynamic torque sensors



4503B

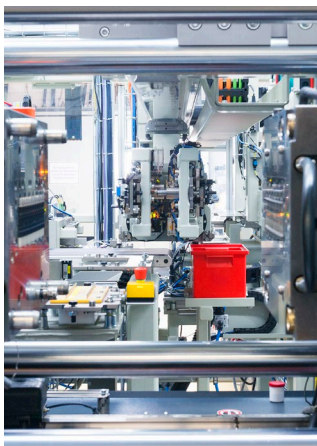


4550A



93x9A

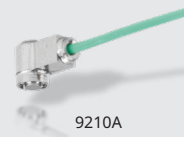
Part manufacturing and quality control



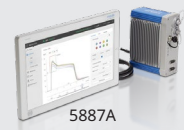
Plastic injection molding



6183D



9210A



5887A

Stamping process control with optical and inductive sensors



PMI-10-10/3-P



PMI-20-30/P



ISS-20-30-1-A

Vision inspection and sorting systems



KVC 121



KVC 621

Assembly of electronic components



Advanced high-speed joining systems



2168A



2166A



5847C

Process monitoring, data acquisition and signal conditioning



5073B



5867C

Software



jBEAM



AkvisIO

Would you like to learn
more about our solutions?
Explore now:



www.kistler.com/electrical+electronics

Kistler Group

Eulachstrasse 22
8408 Winterthur
Switzerland
Phone +41 52 224 11 11

Kistler Group products are protected by various intellectual property rights. For more details visit www.kistler.com

The Kistler Group includes Kistler Holding AG and all its subsidiaries in Europe, Asia, the Americas and Australia.

Find your local contact at
www.kistler.com

KISTLER
measure. analyze. innovate.