

HANDHELD DEVICES 5811A

Quick and easy quality control on-site



Kistler's 5811A handheld devices provide a modern, handy solution for users to acquire and visualize data from piezoelectric measuring chains. They offer customizable measurement modes, including a recording functionality, a variety of visualization options and come with a user-friendly design.

The devices ensure reliable, comprehensive process parameter verification and allow for quality control processes even in the most cramped of spaces as well as in the field.

Your benefits

Portability

Hassle-free on-site measurements with battery-powered device



Presets

User-generated measurement configurations for quick changes between repeatedly executed tasks



Data recording/storage

On-device data recording/storage for quality assurance or further analysis



Interconnectivity

Interaction with external systems (trigger input & analog output)



Robustness

Vibration, shock, free fall and IP54 tested for operation in harsh environments



Feature-based licensing

Extension of functionality as needed



All-in-one kit

Complete kit with all accessories included



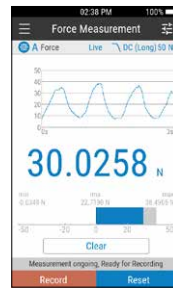
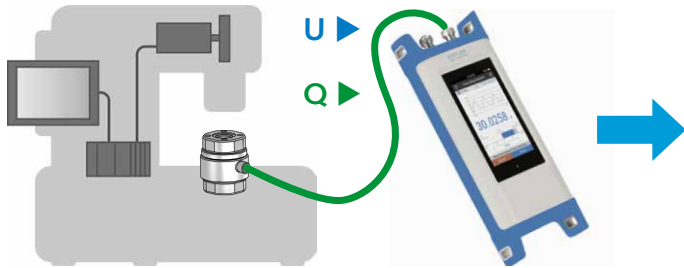
Traceable calibration

Device with traceable calibration to be used within a reference measuring chain



A suitable mode for every use case

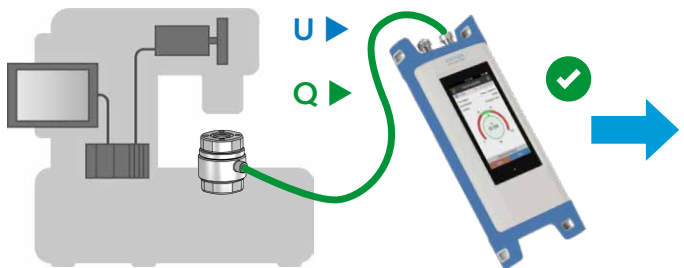
Portable test and measurement device



Measurement mode

- Hassle-free measurement and signal recording on-site
- Display of measurement curve
- Statistics (min, max, rms)
- Data acquisition up to 50 kSps per channel

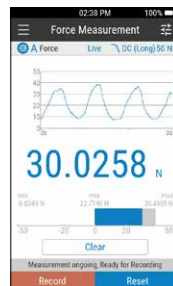
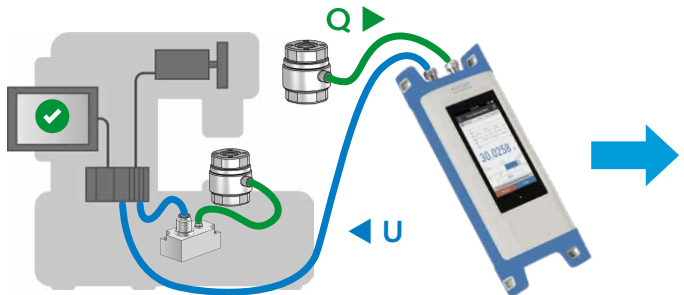
Reference tool for process verification test



Evaluation mode

- Periodic testing of a process according to user-defined limits
- Visualization of the measurement in a customizable gauge graph
- On-device result storage for documentation purposes
- Mode suitable for preloading of force sensors

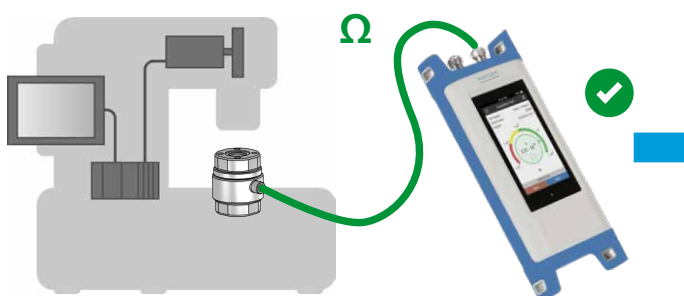
Closed-loop reference measurement



Measurement mode

- Reference measuring device with traceable calibration for handheld and sensor
- Allows for checking correct machine operation
- Feed back of the measured signal to the process control system via voltage output

Sensor and cable insulation test (5811A00 only)



Insulation test mode

- Check the condition of the sensor and cable on-site
- Store results on the device for documentation purposes
- Ensuring a high-insulating measuring chain



Scan to learn more!