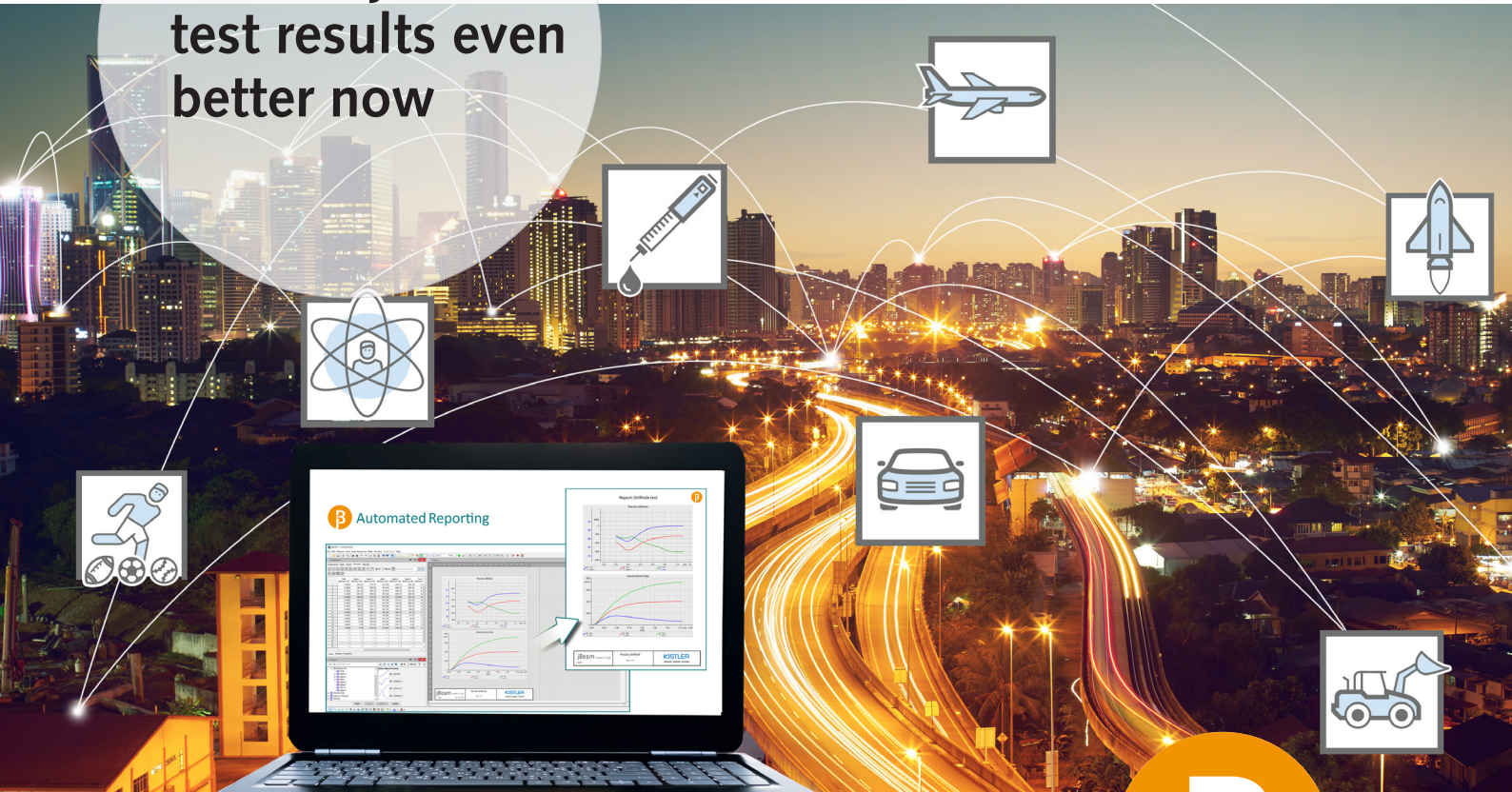


Process your
test results even
better now



Postprocessing of measurement data in distributed working processes



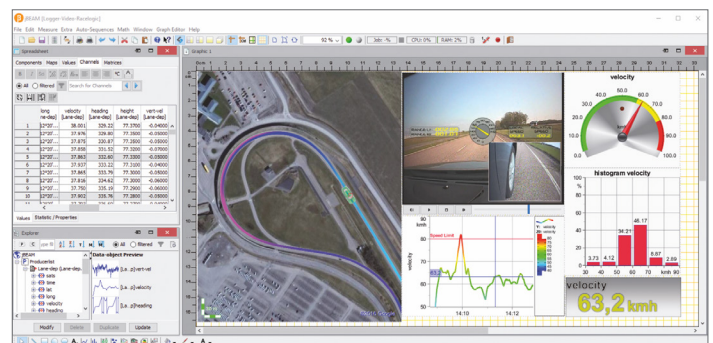
jBEAM - your software for data analysis, visualization and report generation, that works both as a desktop program as well as in web-based measurement data management (MDM) systems. Due to its platform independence and multilingualism, worldwide leading car manufacturers as well as tier

1 suppliers are already using our software for global strategic solutions in R&D. Terabytes of data, hundreds of users, different application areas: together with the EnCom communication protocol the open framework jBEAM enables interactive data analysis in a distributed environment.

Extensive visualization

Perfect presentation of data content

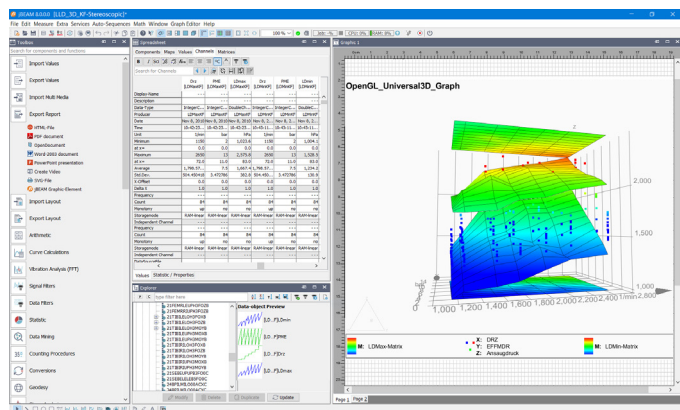
- Value, channel, and matrix graphs
- Combined display of multiple signals in single diagrams
- Synchronous visualization of video and numerical data
- Live rendering of geodetic data on map



Interactive analysis

Accomplish the required analysis quickly and efficiently

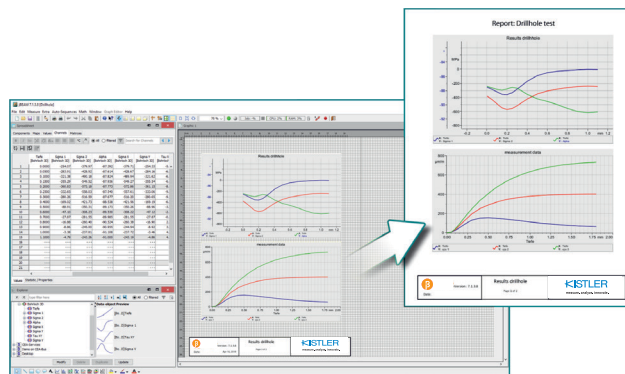
- Work dynamically with your test data
- Interactive control elements (cursor, input field, knob, slider etc.) for parametrization of calculations
- Export configured analysis as a template for future reporting
- Prepare measurement data for data science application



Automated reporting

Create complete test reports

- Reports with more than 500 pages
- Formats such as PDF, Word, Powerpoint, HTML and more are available
- Use predefined templates for projects, page layouts (table of contents, header, footer,...), calculation groups, and graphic objects



Producer-consumer structure

- Stateful design, enabling automated, partial re-validation of analysis chain
- No scripting for validation is necessary


Data mining

Data mining algorithms for statistical results of multiple files, generated swiftly by cluster architecture such as pattern detection, clustering, prediction or transformation. jBEAM provides ready to use data mining modules and scripting capabilities for Groovy and Python.

Fields of Application

jBEAM can be used in a multitude of different application fields. It is a powerful and universal tool for processing test data of any kind.

jBEAM editions



Professional
Comfortable range of features for industrial users

Enterprise
Most extensive edition for users with high expectations

Packages available to order additionally to any edition of jBEAM

- **Engine/turbocharger** (characteristic maps visualization and calculation)
- **GPS** (map services and GPS related calculations)
- **FFT** (FFT related calculations and filter)
- **Multi-File** (data source manager and multi file importer)
- And more packages like statistics, passive safety, real time graphics ...

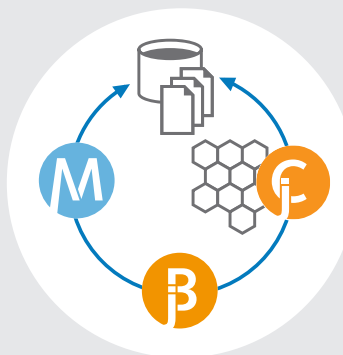
Perfect complement

MaDaM

The measurement data management system for distributed work processes, fast search by indexing technology and web-based user interface

jBEAM Cluster

Parallel analysis using multiple instances of jBEAM to speed up the analysis process of thousands of data files



Kistler Group
Eulachstrasse 22
8408 Winterthur
Switzerland

Products of the Kistler Group are protected by various intellectual property rights. For more details, visit www.kistler.com
The Kistler Group includes Kistler Holding AG and all its subsidiaries in Europe, Asia, the Americas and Australia.

Tel. +41 52 224 11 11

Find your local contact at www.kistler.com

KISTLER
measure. analyze. innovate.