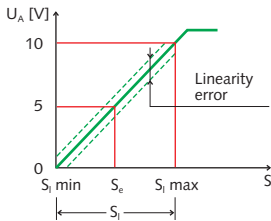
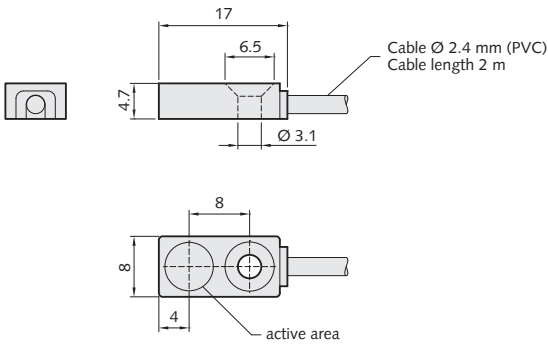


# IS-A series

Inductive switches with analog output  
0–10 V – free cable end

# KISTLER

measure. analyze. innovate.



## Application

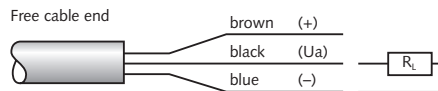
Double sheet control  
Measuring inside the stamping tool

## Specifications

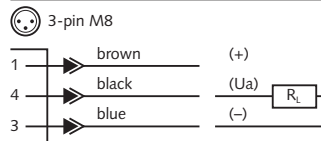
|                                 |                                         |
|---------------------------------|-----------------------------------------|
| Circuit                         | Analog amplifier                        |
| Operating voltage               | 15 – 30 VDC, reverse polarity protected |
| Output voltage $U_a$            | 0 – 10 VDC                              |
| Load resistance $R_L$           | 1 k $\Omega$ min.                       |
| Limit frequency                 | 500 Hz                                  |
| Linearity range $S_i$           | 0 – 2 mm/quasi flush                    |
| Max. temperature drift at $S_i$ | $\pm 5\%$ (from $U_a$ max.)             |
| Linearity error                 | $\pm 3\%$ (from $U_a$ max.)             |
| Repeatability                   | $\leq 3\%$ (from $U_a$ max.)            |
| Rated operating distance $S_e$  | 1,00 mm, ST37                           |
| Temperature range               | 10°C – 60°C                             |
| Short circuit proof             | yes                                     |
| EMC according to 2014/30/EU     | EN 61000... C $\epsilon$                |
| System of protection            | IP 67                                   |

Note: Effective distance  $S_e = 1,00$  mm by attenuation at BDC (reference: ST37).

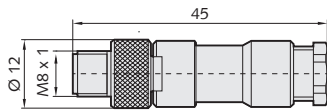
## Cable output (IS-M8-51-1-A)



## Pin configuration



## 3-pole M8 connector



## Application example

see "KCA 400"

| Article                                    | Order No.       |
|--------------------------------------------|-----------------|
| with cable output:                         |                 |
| IS-8-16-1-A                                | 6608-16100-0000 |
| with cable output and 3-pole M8 connector: |                 |
| IS-8-16-1-A/RS-M8                          | 6608-16100-3000 |

## Accessories (more accessories, see last pages)

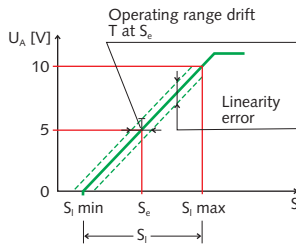
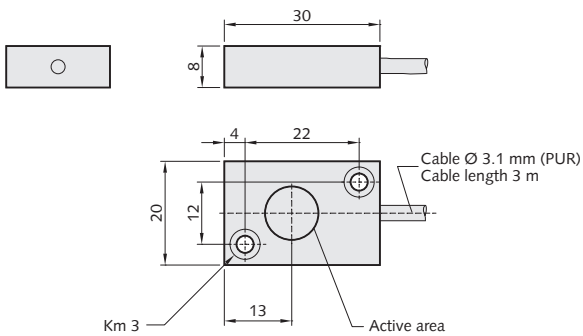
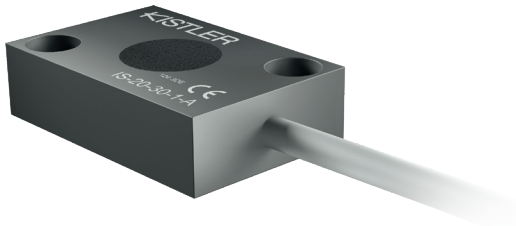
| Article                                                                       | Order No.       |
|-------------------------------------------------------------------------------|-----------------|
| Analog controller KCA 400<br>(Connection to KCA 400 with 3-pole M8 connector) | 4440-00010-0000 |

# IS-A series

Inductive switch with analog output 0–10 V – free cable end



measure. analyze. innovate.



## Application

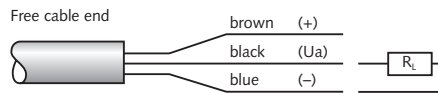
Double sheet control

Measuring inside the stamping tool

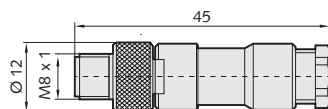
## Specifications

|                                       |                            |
|---------------------------------------|----------------------------|
| Circuit                               | Analog amplifier           |
| Operating voltage                     | 24 VDC ±10%                |
| Output voltage $U_a$                  | 0 – 10 VDC                 |
| Load resistance $R_L$                 | 5 k $\Omega$ min.          |
| Limit frequency                       | 1 KHz                      |
| Linearity range $S_i$                 | 0.5 – 2 mm/flush mountable |
| Max. temperature drift at $S_i$       | ±5% (from $U_a$ max.)      |
| Linearity error                       | ±3% (from $U_a$ max.)      |
| Repeatability                         | ≤ 3% (from $U_a$ max.)     |
| Rated operating distance $S_e$        | 1.25 mm, mit ST37          |
| Max. operating range drift T at $S_e$ | ±0.125 mm                  |
| Temperature range                     | 10°C – 60°C                |
| EMC according to 2014/30/EU           | EN 61000... c $\epsilon$   |
| System of protection                  | IP 67                      |

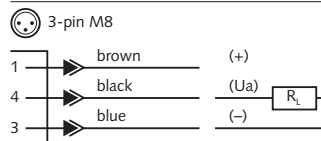
## Cable output



## 3-pole M8 connector



## Pin configuration



| Article                                   | Order No.       |
|-------------------------------------------|-----------------|
| with cable output:                        |                 |
| IS-20-30-1-A                              | 6620-30150-0000 |
| with cable output and 3-pin connector M8: |                 |
| IS-20-30-1-A/RS-M8                        | 6620-30150-3000 |

## Accessories (more accessories, see last pages)

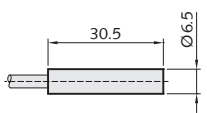
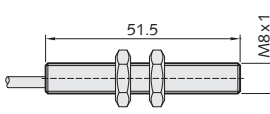
| Article                         | Order No.       |
|---------------------------------|-----------------|
| Mounting bracket for tool:      |                 |
| HD-IS-O Analog sensors (top)    | 2200-00011-0000 |
| HD-IS-U Analog sensors (bottom) | 2200-00012-0000 |

# IS-A series

Inductive switches with analog output  
0–10 V – free cable end

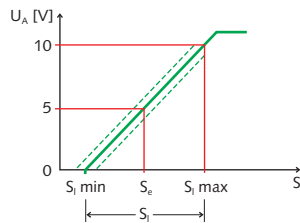
# KISTLER

measure. analyze. innovate.

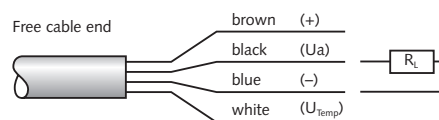
| Drawing                                                                                                      | Sensor type     | Linearity range $S_i$<br>flush                                | Order No.       |
|--------------------------------------------------------------------------------------------------------------|-----------------|---------------------------------------------------------------|-----------------|
| <br>with temperature output | IS-6,5-30-1,5-A | 0.5 – 2 mm<br>Rated operating distance $S_e = 1.25$ mm (ST37) | 6606-30120-0000 |
|                             | IS-M8-51-1-A    | 0.5 – 1.5 mm<br>Rated operating distance $S_e = 1$ mm (ST37)  | 6608-51100-0000 |

### Specifications

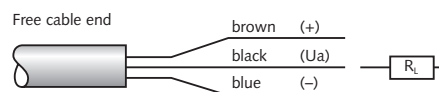
|                                   |                              |
|-----------------------------------|------------------------------|
| Operating voltage                 | 24 VDC $\pm 10\%$            |
| Output voltage $U_a$              | 0 – 10 VDC                   |
| Load resistance $R_L$             | $> 5$ k $\Omega$             |
| Limit frequency                   | 1 KHz                        |
| Max. temperature drift at $S_i$   | $\pm 5\%$ (from $U_a$ max.)  |
| Linearity error                   | $\pm 3\%$ (from $U_a$ max.)  |
| Repeatability for IS-6,5-30-1,5-A | $\leq 3\%$ (from $U_a$ max.) |
| Temperature range                 | 10°C – 60°C                  |
| EMC according to 2014/30/EU       | EN 61000... C $\epsilon$     |
| System of protection              | IP 67                        |



### Cable output (IS-6,5-30-1,5-A)



### Cable output (IS-M8-51-1-A)



### Accessories (more accessories, see last pages)

| Article                                                                          | Order No.       |
|----------------------------------------------------------------------------------|-----------------|
| Analog controller KCA 400<br>(Connection to KCA 400 with<br>3-pole M8 connector) | 4440-00010-0000 |