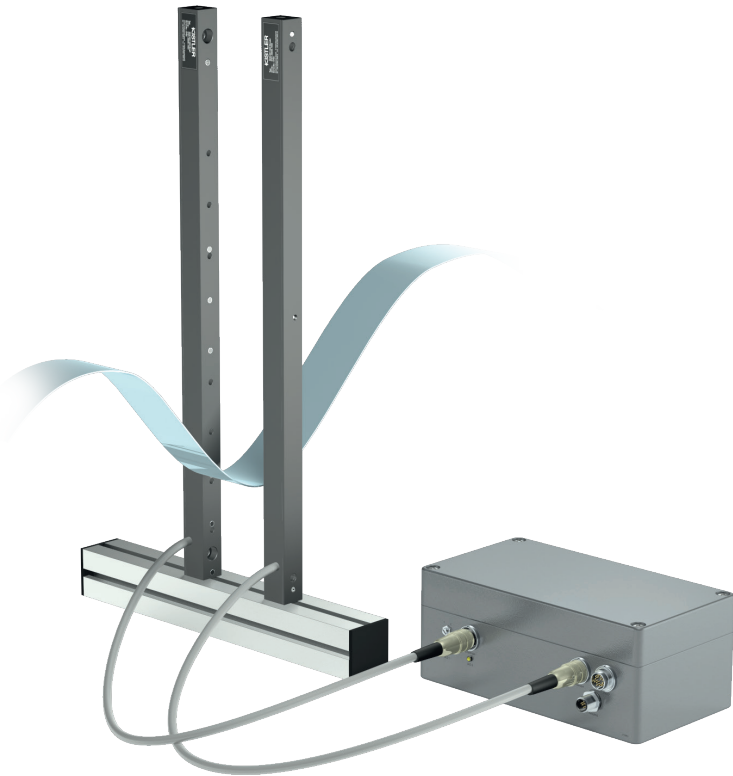


DHS series

Loop control with separate amplifier
– analog output 0–10 VDC

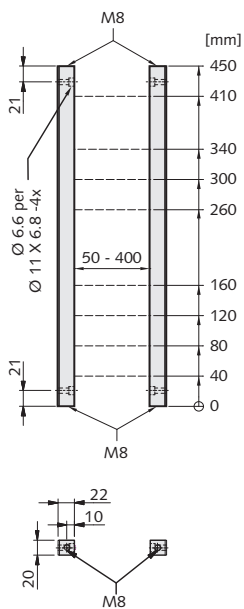
KISTLER

measure. analyze. innovate.

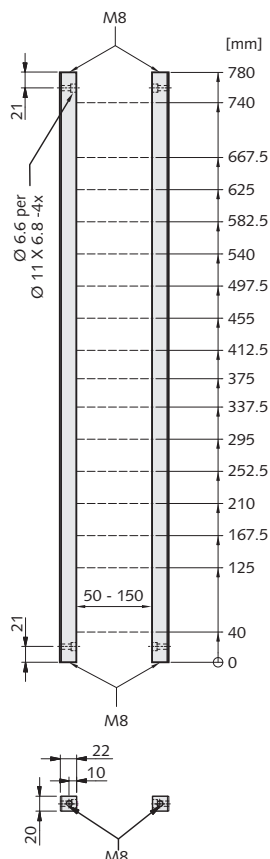


Transmitter and receiver bar with 8 or 16 light barriers

DHS 801/450:



DHS 1601:



Application

8- or 16-channel loop control with variable operating range between 50 and 400 mm

Switchable winding and unwinding operating modes stored in memory

Specifications

Circuit	Constant light trigger, PIC controller
Operating voltage	24 VDC $\pm 10\%$
Current consumption	< 200 mA
Mode of operation	dynamic
Sensitivity	> 0.1 mm, depending on distance A between transmitter and receiver bar
Output with LED	0 – 10 VDC, green LED lights up briefly when a light beam is crossed
Switch output SA	DHS 801: PNP, for channel 0 + 7 DHS 1601: PNP, for channel 0 + 15
Function	normally open (NO)
Load current	max. 100 mA short-circuit proof
Frequency	>1 KHz
Temperature range	0°C – 60°C
EMC according to 2014/30/EU	EN 61000... C ϵ
System of protection	IP 65, for transmitter and receiver bar

Resolution DHS 801:

Distance A [mm]:	50–249	250–400
Material thickness [mm]:	0.2	0.1

Resolution DHS 1601:

Distance A [mm]:	50 – 150
Material thickness [mm]:	0.1

Article

Order No.

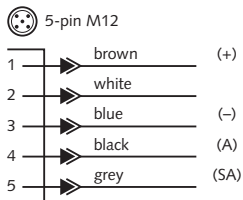
DHS 801/450	8701-45008-1000
DHS 801/920	8701-92008-1000
DHS 1601/780	8701-78016-1000

Amplifier for loop control



Housing dimensions (L x W x H):
220 x 120 x 90 mm

Pin configuration

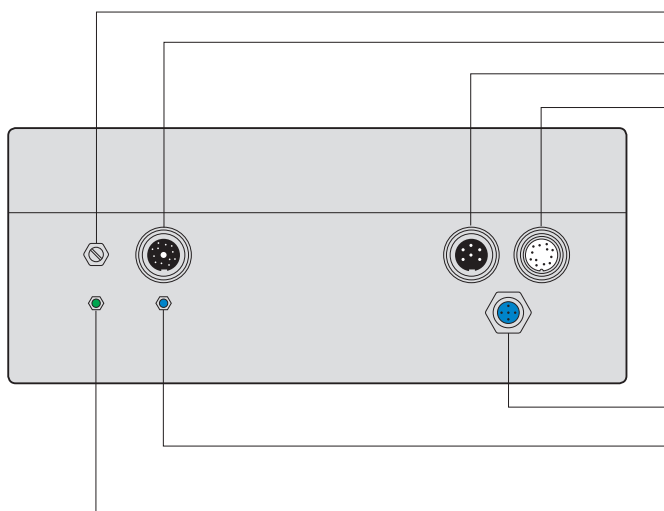


Pin 1: +24 VDC
 Pin 2: Ext. range selection
 n.c. → memory range 1, LED off
 5 VDC → memory range 2, LED on
 Pin 3: 0 V
 Pin 4: Output 0 – 10 VDC
 Pin 5: switch output PNP

Accessories (more accessories see last pages)

Article	Order No.
Connection cable:	
VK-M12-5-g (5 m, straight)	2112-00005-0500
VK-M12-5-w (5 m, angled)	2112-00005-1500
DHS x /feet (pair)	
DHS x /450 protective plate transmitter complete	8600-00110-0005
DHS x /450 protective plate receiver complete	8600-00110-0007
DHS x /780 protective plate transmitter complete	8600-00810-0006
DHS x /780 protective plate receiver complete	8600-00810-0007
DHS x /920 protective plate transmitter complete	8600-00210-0006
DHS x /920 protective plate receiver complete	8600-00210-0007
DHS x /450 stabilizer (pair)	8600-00450-0009
DHS x /780 stabilizer (pair)	8600-00780-0009
DHS x /920 stabilizer (pair)	8600-00920-0009
Programming adapter:	
PA16-DHS	8601-00100-0000

Transmitter and receiver bar are both pluggable



Memory range 1/2 mode switch
 Plug connection for receiver
 Plug connection for transmitter
 Programming adapter

Freely programmable with programming adapter PA16-DHS!

Note:
 With the optional programming adapter output voltages between 0 and 10 V may be set for each channel!

5-pin M12
 LED off: memory range 1 (e.g. winding)
 LED on: memory range 2 (e.g. unwinding)
 Green LED: lights up briefly when a light beam is crossed

Switch output SA:

Upon crossing the light beams of channels 0 + 7
 (DHS 1601: channels 0 + 15), an additional output is activated, e.g. for band tension or band end (limit signals)